

Calendar & Diary Ranges



2025

Contact Us:

010 216 9008 083 690 3636 info@designexpress.co.za www.designexpress.co.za

2025

Calendar & Diary Ranges

Welcome to our 2025 Calendar & Diary Ranges Catalogue.

Please note the following:

- Available while stocks last. Please ensure you place your orders early.
- Peak season: Please allow 4-6 weeks for calendars & 6-8 weeks for diaries.

We specialise in calendars, should you wish to customise your own calendar please get in touch with us via any of our contact details below.

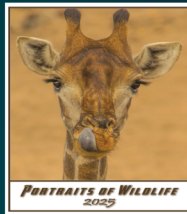
Contents:

13 Page Executive Range	Page 3 - 4
7 Page Executive Range	Page 5 - 8
A1 Jumbo Range	Page 9 - 10
A2 LSP Range	Page 11
A3 Medium Range	Page 12
Deskpad Range	Page 13
Multi Page Tent Range	Page 14
Single Page Tent Range	Page 15
Freighting Calendars	Page 16
2025 Diaries	Page 17 - 18
Contact us	Page 19

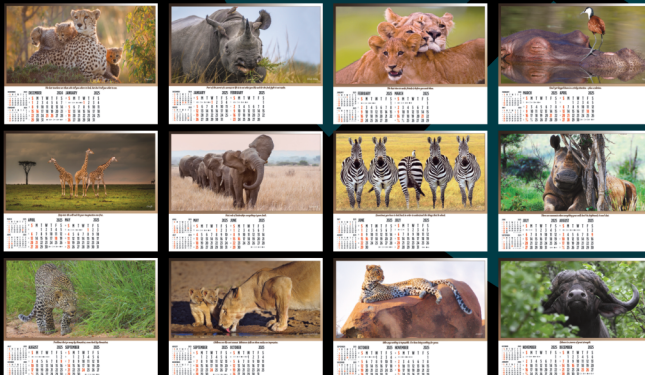
2025 13 Page
Executive Calendar Range

Size: 600mm x 400mm | Advertising Area: 205mm x 90mm
Printed on 200gsm Matt. Wiro bound at top with 1200 micron backing board
and finished with common spot varnish.

3 Options to choose from:
Wildlife Heritage | Portraits of Wildlife | Scenic South Africa



Wildlife Heritage



Portraits of Wildlife



Scenic South Africa



DIGITAL & LITHO PRINTING • GRAPHIC DESIGN • MARKETING

Business Cards | Flyers | Digital Marketing | Duplicate or Tripplicate Books | Logo Design | Notepads | Folders
 Company Profiles | Calendars | Deskpads | Diaries | Catalogues | Banners | Branded Tape | Labels | Stickers
 Canvas | Branded Door Mats | Signage: ABS, Chromadek, Contravision, Laser Cut Aluminium Signs,
 Fabricated Signs, etc. | Corporate Clothing & Branding | Websites, Hosting & SEO

2025 7 Page
Executive Calendar Range

Size: 600mm x 400mm | Advertising Area: 205mm x 90mm
Printed on 200gsm Matt. Wiro bound at top with 1200 micron backing board
and finished with common spot varnish.

11 Options to choose from:

Wildlife Heritage | Animals in Action | Focus on Wildlife | Scenic | Sunrise Sunset
Golf | Xtreme | Evolution | Grand Prix | Portrait of Wildlife | Best of Nature



Grand Prix



Portraits of Wildlife



Xtreme



Contact Us:

📞 010 216 9008

📞 083 690 3636

✉️ info@designexpress.co.za

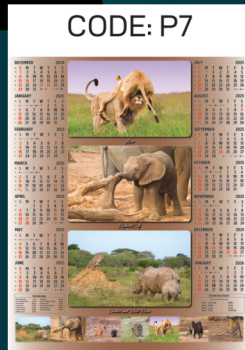
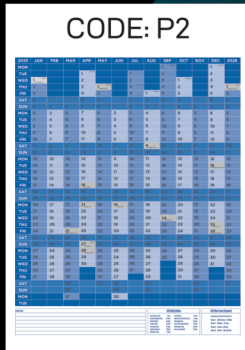
🌐 www.designexpress.co.za

DIGITAL & LITHO PRINTING • GRAPHIC DESIGN • MARKETING

Business Cards | Flyers | Digital Marketing | Duplicate or Triplicate Books | Logo Design | Notepads | Folders
 Company Profiles | Calendars | Deskpads | Diaries | Catalogues | Banners | Branded Tape | Labels | Stickers
 Canvas | Branded Door Mats | Signage: ABS, Chromadek, Contravision, Laser Cut Aluminium Signs,
 Fabricated Signs, etc. | Corporate Clothing & Branding | Websites, Hosting & SEO

2025 A1 Jumbo Calendar Range

Size: 594mm x 841mm | Advertising Area: 570mm x 90mm
Rimmed top and bottom.



CODE: P13

Calendar grid for CODE: P13 featuring a rabbit.

CODE: P14

Calendar grid for CODE: P14 featuring horses.

CODE: P15

Calendar grid for CODE: P15 featuring nature scenes.

CODE: P16

Calendar grid for CODE: P16 featuring birds.

CODE: P17

Calendar grid for CODE: P17 featuring landscapes.

CODE: P18

Calendar grid for CODE: P18 featuring sunset scenes.

CODE: P19

Calendar grid for CODE: P19 featuring tropical beaches.

CODE: P20

Calendar grid for CODE: P20 featuring golf courses.

CODE: P21

Calendar grid for CODE: P21 featuring cars.

CODE: P22

Calendar grid for CODE: P22 featuring various vehicles.

CODE: P23

Calendar grid for CODE: P23 featuring motorcycle racing.

CODE: P24

STILL RACING

Calendar grid for CODE: P24 featuring a Formula 1 car.

CODE: P26

Xtreme

Calendar grid for CODE: P26 featuring extreme sports.

CODE: P27

Calendar grid for CODE: P27 featuring industrial scenes.

CODE: P28

Calendar grid for CODE: P28 featuring group photos.

2025 A2 LSP Calendar Range

Size: 420mm x 594mm | Advertising Area: 400mm x 80mm
Rimmed at top.

Code: L1



Calendar grid for 2025 with wildlife images and monthly data.

Code: L2



Calendar grid for 2025 with a lion cub image and monthly data.

Code: L3



Calendar grid for 2025 with a mountain landscape image and monthly data.

Code: L4



Calendar grid for 2025 with various bird images and monthly data.

Code: L5



Calendar grid for 2025 with a sunset image and monthly data.

Code: L6



Calendar grid for 2025 with a bridge image and monthly data.

2025 A3 Medium Calendar Range

Size: 297mm x 420mm | Advertising Area: 280mm x 60mm
Holed drilled at head.

CODE: M1




CODE: M2




CODE: M3




CODE: M4






CODE: M5




CODE: M6




CODE: M7

CODE: M8






CODE: M9




CODE: M10




CODE: M11

CODE: M12




A2 Desypad Ranges Wildlife • Scenic • Underwater • Grand Prix

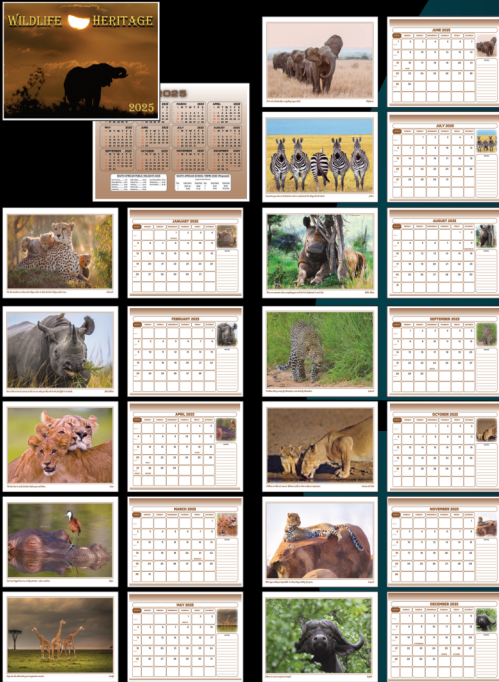
Size: 580mm x 420mm | Advertising Area: 565mm x 85mm

12 Pages with different artwork on each page with 1200 micron backing board & 2 PVC corners.

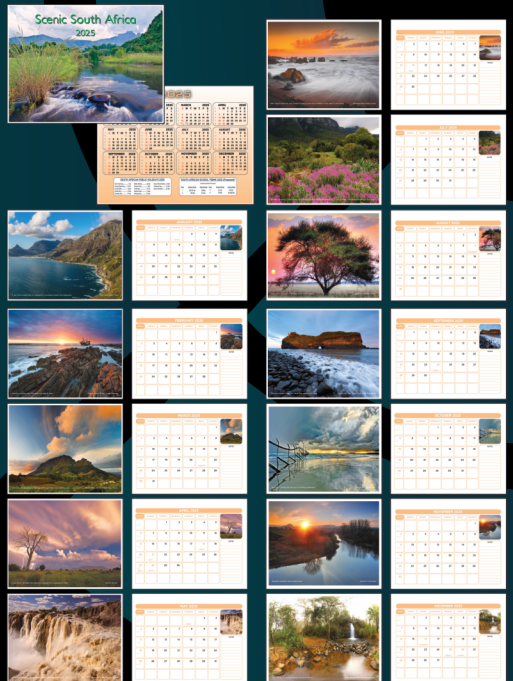


Multi Page Tent Calendar Range Wildlife and Scenic

Wildlife



12 Individual months wire bound at top.
Advertising area on stand seen from both sides.
12 Pages with different artwork on each page with
1200 micron backing board & 2 PVC corners.
Includes year to view calendar,
school terms and public holidays.



2025 Single Tent Calendar Range

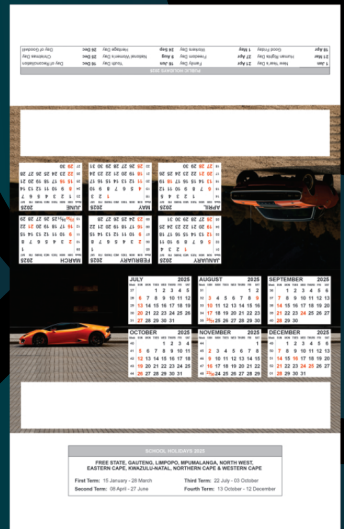
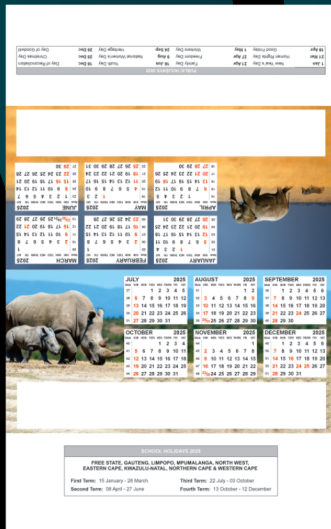
Size:
210mm (w) x 105mm (h)
Advertising Area:
200mm (w) x 30mm (h)



Ocean
Code: T1

Wildlife
Code: T2

Cars
Code: T3



DIGITAL & LITHO PRINTING • GRAPHIC DESIGN • MARKETING

Business Cards | Flyers | Digital Marketing | Duplicate or TriPLICATE Books | Logo Design | Notepads | Folders
Company Profiles | Calendars | Deskpads | Diaries | Catalogues | Banners | Branded Tape | Labels | Stickers
Canvas | Branded Door Mats | Signage: ABS, Chromadek, Contranslon, Laser Cut Aluminium Signs,
Fabricated Signs, etc. | Corporate Clothing & Branding | Websites, Hosting & SEO

Freighting Calendars

x4 Panels with 36 calendar leaves and date pads.
 Panel size: 210mm x 300mm | Pad size: 170mm x 300mm



2023		DECEMBER						2023	
WEEK	MONDAY	TUESDAY	WEDNESDAY	THURSDAY	FRIDAY	SATURDAY	SUNDAY		
48				1	2	3	4		
49	5	6	7	8	9	10	11		
50	12	13	14	15	16 <small>Public Holiday</small>	17	18		
51	19	20	21	22	23	24	25 <small>Public Holiday</small>		
52	26 <small>Public Holiday</small>	27	28	29	30	31			

Tel: 012 347 2222 Fax: 012 347 3533
 sales@brittech.co.za www.brittech.co.za

2024		JANUARY						2024	
WEEK	MONDAY	TUESDAY	WEDNESDAY	THURSDAY	FRIDAY	SATURDAY	SUNDAY		
1							1 <small>1st January</small>		
2	2	3	4	5	6	7	8		
3	9	10	11	12	13	14	15		
4	16	17	18	19	20	21	22		
5	23 /30	24 /31	25	26	27	28	29		

Spikkels: 082 441 4477 • Wian: 082 301 1100 • Etienne: 082 550 2550
 Theo: 082 821 0808

2024		FEBRUARY						2024	
WEEK	MONDAY	TUESDAY	WEDNESDAY	THURSDAY	FRIDAY	SATURDAY	SUNDAY		
5			1	2	3	4	5		
6	6	7	8	9	10	11	12		
7	13	14	15	16	17	18	19		
8	20	21	22	23	24	25	26		
9	27	28							

Horizontal Belt Filters • Linear Screens • On-site Services

2025 Diaries

We offer 4 diary sizes:

- A4 (210mm X 297mm),
- A5+ (165mm X 235mm),
- A5 (148mm X 210mm) and
- Slim line (80mm X 150mm)

Our diary production process:

- Text of 352 pages
- Printed on 70 gsm Triple Green Eco Friendly paper stock
- From flat sheets, sections perforated and folded
- Sections are inserted and then collated
- Diary blocks are then sewn and checked individually for any errors
- All processes are done by fully automated machinery
- Endpapers are then fitted onto book block through a book-line machine
- Once glued the next station will put on the back-liner which will protect the final diary from falling apart
- Books are then sent through a drying unit
- Next step is the trimming of the book blocks with three knife trimmer
- A ribbon is then fitted on the head of the trimmed book block
- Head and tail bands are glued on top and bottom of spine to fill in the gap
- Covers are done whilst the book blocks are produced, they are then married to the book blocks using the Casing machine
- Completed diaries are then pressed and grooved using a pressing unit
- Ready diaries are then wiped, checked and packed for dispatch



Foiled Diaries

- Colour and position of foiling (Gold, Silver or Embossing) can be selected
- Endpapers can be foiled (Gold or Silver)
- Tip in pages can be inserted - 4pp / 8pp / 12pp



Custom Diaries

- Printed diary covers
- Stitching colour can be altered
- Bespoke book blocks (only viable on very large quantities)
- Colour and position of foiling (gold, silver or embossing) can be selected
- Tip-in pages can be inserted - 2pp / 4pp / 8pp / 12pp / 16pp / 24pp / 32pp / 64pp (sewn in)
- Wraps can be inserted - 4 pages, set of 8 wraps (32 pages)
- UV Embossed (scodix) diaries



Please Note:

Early orders guarantee timeous deliveries, Deliveries are subject to and greatly influenced by the production time available after approval of all proofs.

- Stock diaries - 4 weeks production
- Bespoke Diaries - 8 to 10 weeks after approved proofs.



2025

Calendar & Diary Ranges

Thank you for viewing our 2025 Calendar Ranges catalogue.

Should you need more information regarding our ranges or if you would like a quotation on customised calendars, please contact us.

CORPORATE GIFTING & BRANDING:

Please email sales@designexpress.co.za to request a gifting catalogue.

**Design
Express**

Printing | Marketing | Promotions

Contact Us:

☎ 010 216 9008

☎ 083 690 3636

✉ info@designexpress.co.za

🌐 www.designexpress.co.za

quality printing & design, always on time.

DIGITAL & LITHO PRINTING • GRAPHIC DESIGN • MARKETING

Business Cards | Flyers | Digital Marketing | Duplicate or Triplicate Books | Logo Design | Notepads | Folders
Company Profiles | Calendars | Deskpads | Diaries | Catalogues | Banners | Branded Tape | Labels | Stickers
Carvas | Branded Door Mats | Signage: ABS, Chromadek, Contravision, Laser Cut Aluminium Signs,
Fabricated Signs, etc. | Corporate Clothing & Branding | Websites, Hosting & SEO